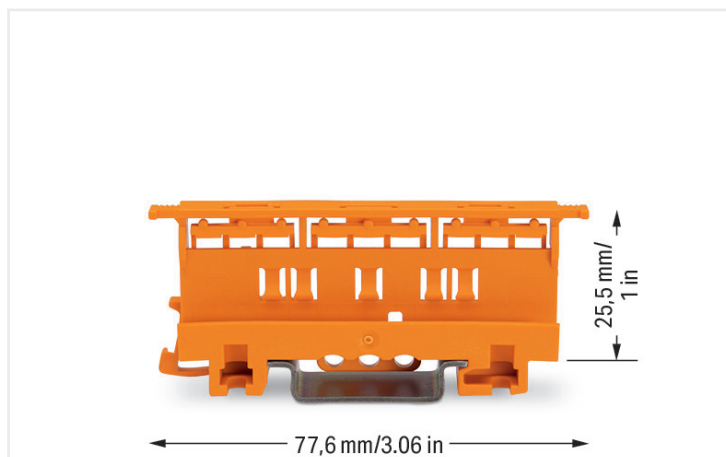


Adatlap | Cikkszám: 221-500

Rögzítő-távtartó; 221 sorozat - 4 mm²; kalapsínre/csavaroros szereléshez; narancssárga



Fizikai adatok

Szélesség	17,5 mm / 0.689 inch
Magasság	77,6 mm / 3.055 inch
Length from upper-edge of DIN-35 rail	25,5 mm / 1.004 inch

Mechanikai adatok

Szerelés típusa	DIN 35 kalapsín Csavaros rögzítés
Suitable	for 2-, 3- and 5-conductor 221 Series Splicing Connectors (4 mm ²)

Anyag információk

Note (material data)	Information on material data can be found here
Szín	narancssárga
Szigetelő anyagcsoport	I
Szigetelő anyaga	Poliamid 66 (PA 66)
UL 94 szerinti gyúlékonysági osztály	V0
Tűzterhelés	0 MJ
Tömeg	9.6 g

Kereskedelmi adatok

eCl@ss 10.0	27-14-11-92
eCl@ss 9.0	27-14-11-92
ETIM 8.0	EC002848
ETIM 7.0	EC002848
Csomagolási egység	50 (10) Stükk
Csomagolás típusa	Box
Származási ország	CN
EAN/VTSZ	4055143421942
Vámtarifaszám	39269097900

Letöltések

Documentation

Additional Information

Technical Section	pdf 2142.18 KB	↓
-------------------	-------------------	-------------------

Bid Text

221-500	19.02.2019	xml 2.72 KB	↓
221-500	23.01.2019	docx 14.58 KB	↓
ausschreiben.de 221-500			↓

CAD/CAE-Data

CAD data

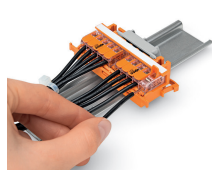
2D/3D Models 221-500	↓
----------------------	-------------------

CAE data

EPLAN Data Portal 221-500	↓
ZUKEN Portal 221-500	↓

Szerelési útmutató

Vezetékbekötés



CAGE CLAMP® connection:
Conductor termination with connectors
fitted in a mounting carrier



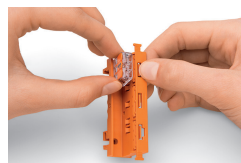
Removing a conductor.



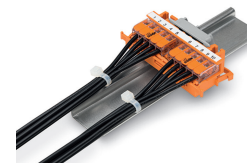
Securing a strain relief plate (222-505) to
the mounting carrier.



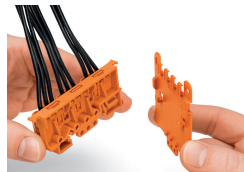
Snapping the angled DIN-rail adapter
(222-510) onto the mounting carrier.



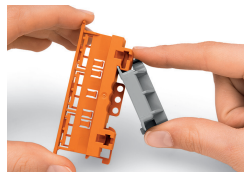
Horizontal mounting on DIN-35 rail using
an angled DIN-rail adapter



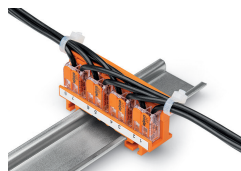
Horizontal mounting on DIN-35 rail using
an angled DIN-rail adapter



Horizontal screw mounting with strain relief
plate on a flat surface



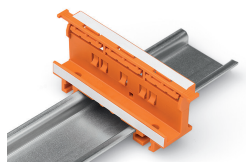
Vertical mounting with strain relief plate
on DIN-35 rail



Strain relief via cable ties on the mounting
carrier (transverse to the connectors'
wiring direction) – clamping units labeled
via marking strips (210-334)



Vertical screw mounting with strain relief
plate on a flat surface



Mounting carrier on a DIN-35 rail

Ellenőrzés



Testing connectors via test slots on top of the carrier.