



PROTECT BANK VAULTS, SAFES, ATMS AND MORE

**The Best Way to Protect
High-Risk Commercial Assets**

Be Armed for Any Attack



SC100 Series

The Best Solution for Protecting Safes, Bank Vaults, ATMs and More

Honeywell's SC100 Series Seismic Vibration Sensors are designed to detect attempts to break into safes, vaults, ATMs, night deposit boxes and other high-risk areas that organizations have often found too costly or impractical to protect. Without seismic detection, even the highest quality safe or vault is vulnerable to attack.

Whether protecting expensive valuables, cash or information, any confined physical structure should be armed with Honeywell's SC100 Series Sensors. They're an excellent way to provide your commercial customers with the robust security they demand—giving you a competitive edge you can take to the bank.

A Detector For Every Application



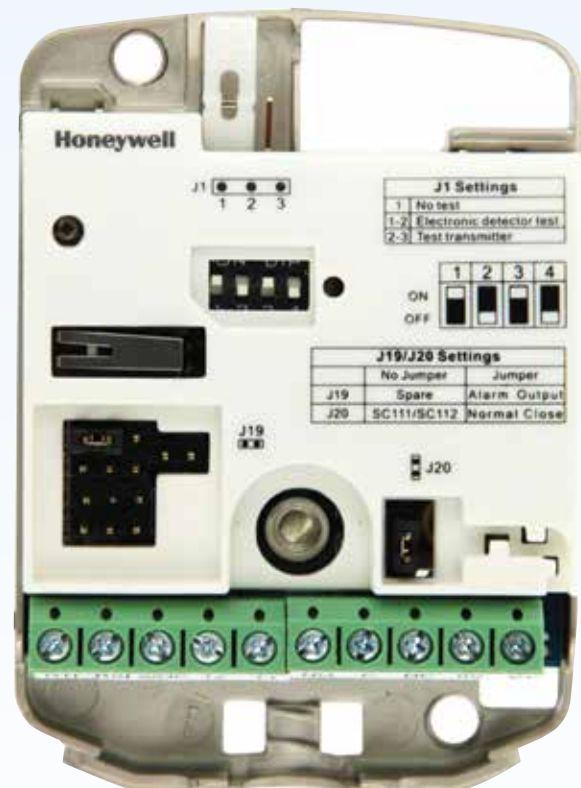
SC100

- Detects vibrations resulting from attempts to disturb solid structures including bank vaults, safes, fixed ATMs and doors
- A simple change of a dipswitch setting lets you choose between protecting a safe, vault or ATM.

SC105

- Uniquely equipped to safeguard freestanding objects like mini ATMs, vending and ticket machines or to secure file cabinets in noisy environments
- Excellent for high-risk items like gun cases in retail environments or drug cabinets in medical and pharmaceutical settings

Both models can be installed in new or existing security systems.



SC100

Superior Performance and Value

Superior Protection

- Offers superior protection over traditional shock sensors, which often lack the reliability to discriminate between ambient vibration and real attacks
- Detects heavy strikes from sledgehammers, repeated knocks from hammer and chisel attacks
- Detects cutting attempts from drills, mechanical cutters, diamond drills, acetylene torches and thermic lances
- Operates in harsh, rugged environments and extreme temperatures (-40° F to 158° F)
 - SC100 and SC105 will alarm if temperature exceeds 185° F
 - SC100 model alarms when temperature rises faster than 6° F per minute

Easy Installation and Reduced Costs

- The compact size enables placement inside small hardware—letting you safeguard items that were previously difficult to protect
- Built-in end-of-line (EOL) resistors improve connectivity to the control panel—boosting reliability, saving you time and reducing service calls and associated expenses
- Integrated temperature alert feature eliminates the need for additional sensors—reducing your inventory and saving you money
- Easily added to existing security systems as well as new installations



A Name You Can Trust. The Standards You Demand.

World-Class Testing Facilities

Honeywell's Seismic Sensors are the right choice when you demand the highest degree of security performance. After all, millions of our sensors are installed worldwide, operating trouble-free—making Honeywell a name you can trust. They extend the boundaries of sensor design and are rigorously challenged in testing facilities built to exceed the toughest world standards.

Honeywell Global Seismic Test Facility



Thermic Lance at over 2500°C



Acetelyne Torch



Coring Drill



High Speed Diamond Tip Drill



Standard Concrete Drill



Accessories



Moveable Mounting Kit

The moveable mounting kit provides extra door protection. When mounted, it prevents the door from opening when the seismic detector is on the night position plate. The mounting kit can be wired to prevent system arming when the detector is on the day position plate—making it impossible for the staff to forget to shut the door.

SC111



Remote Transmitter

The remote test transmitter is connected directly to the detector with a plug-in connector. This transmitter is used to perform a functionality test of the seismic detectors prior to system arming.

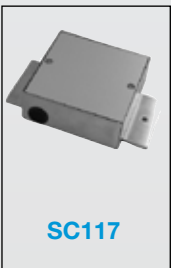
SC113



External Test Transmitter

Used to send a test signal to multiple seismic detectors on a given wall.

SC115



Floor Recess Mounting Kit

The recessed floor mounting box is used to install seismic detectors in concrete floors during construction.

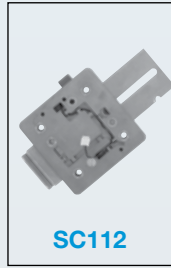
SC117



SC110

Universal Mounting plate

Can be used to secure the device directly to a concrete surface and can be tack welded for mounting to steel surfaces.



SC112

Keyhole Protection Kit

The keyhole protection plate has a reinforced steel lever to secure the keyhole. It can be wired to inhibit arming of the system while the lever is in the day position—making it impossible for staff to forget to remove keys. In the night position the lever will cover the keyhole and stop intruders from inserting explosives or stolen keys in the keyhole.



SC114

Armored Cable

Used to protect wiring of the seismic detector.



SC116

Wall Recess Mounting Kit

A recess mounting box that can be used when the seismic detector is mounted in concrete walls during construction.



SC118

Spacer

Installed to create a wider gap between keyhole and SC112 keyhole protection kit.

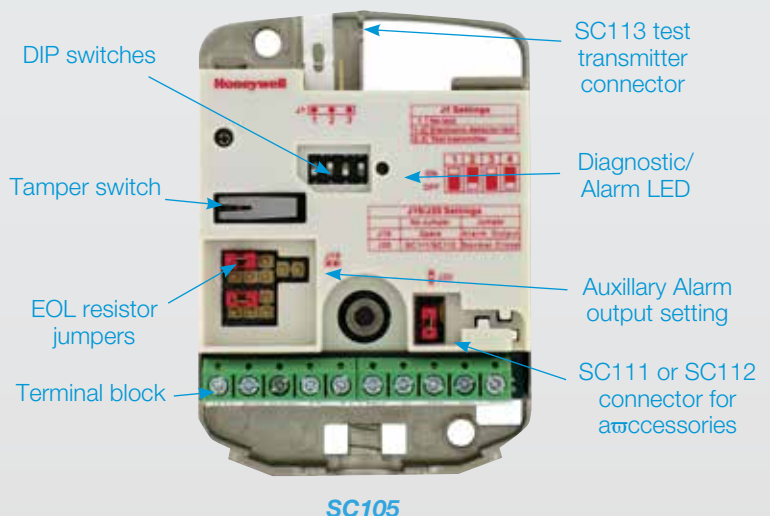
Specifications

Specifications		SC100	SC105
Power Requirements	Supply Voltage	8 – 16VDC, nominal 12VDC	
	Current Consumption	Typical 3 mA @ 12VDC	
Sensitivity	Adjustable Sensitivity	4 levels by DIP switches	
	ATMs/Vault Selection	by DIP switch	N/A
	Delayed Triggering	N/A	by DIP switch
	Reduced Sensitivity Input	For maintenance & service: Active low (<1.5 VDC)	
	Detection Radius	16.4'	9.8'
	Alarm Algorithm	Highly sensitive to all known attacks while rejecting known false alarm sources by innovative filters and firmware	Similar to the SC100 but adjusted for noisy environments such as public areas where ATMs may be located
Alarm Outputs	Solid State Relay (Change Over)	30VDC/100 mA; Type C	30 VDC/100 mA; Type A
	Open Collector	Active low during alarm	
	Alarm Hold Time	Approx. 2.5 secs	
Sabotage Protection	Pry-off and Cover Switch	30 VDC/100 mA	
	Low Supply Voltage Alarm	< 7 VDC	
	Temperature Alarm	185° F, 23° F, 41° F	
	Internal Functional Alarm	Stainless steel drill shield	
Inputs	Remote Test	Active low 1.5 VDC, test duration < 0.5 sec	
	Reduced Sensitivity Input	Active low 1.5 VDC, test duration < 0.5 sec Sensitivity reduction to 12.5 %	
Installation Tool	A noise and alarm indicator is incorporated to support sensitivity setting.		
Environmental Conditions	Maximum Humidity	95% RH (non-condensing)	
	Operating Temperature	-40° F – 158° F	
	Storage Temperature	-58° F – 158° F	
	Environmental Class (VdS)	III	
	Housing Protection Category	IP43	
Housing	Dimensions	3.15" H x 2.36" W x .83" D	
	Chassis and Cover	Die-cast metal	
	Color	RAL7035 (light gray)	
	Weight	.5 lbs.	

Standards

UL 639 for Grade "A" mercantile installations
ULC-S306

Applications	SC100	SC105
Vault Doors	✓	
Night Deposit Safes	✓	
Modular Vaults	✓	
Hatches	✓	
Chests	✓	✓
Filing Cabinets		✓
Vending Machines		✓



SC105

For more information:

www.honeywell.com/security

Automation and Control Solutions

Honeywell Security Products Americas

2 Corporate Center Dr. Suite 100

P.O. Box 9040

Melville, NY 11747

1.800.467.5875

www.honeywell.com

L/SC100B/D
July 2012

© 2012 Honeywell International Inc.

Honeywell