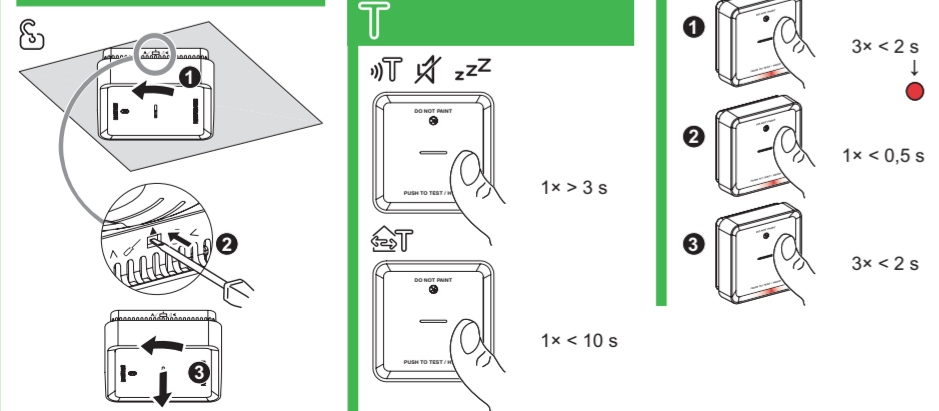
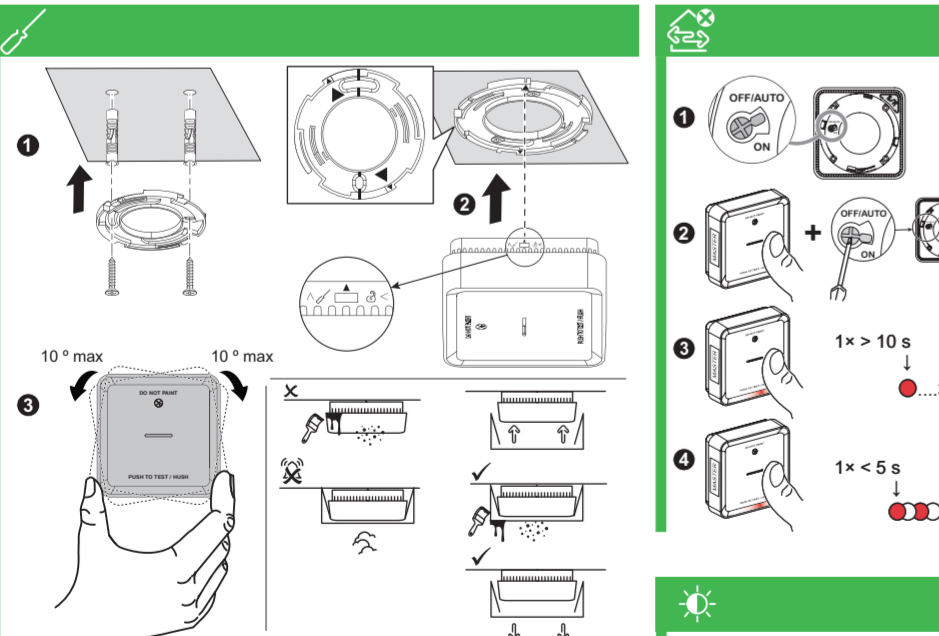
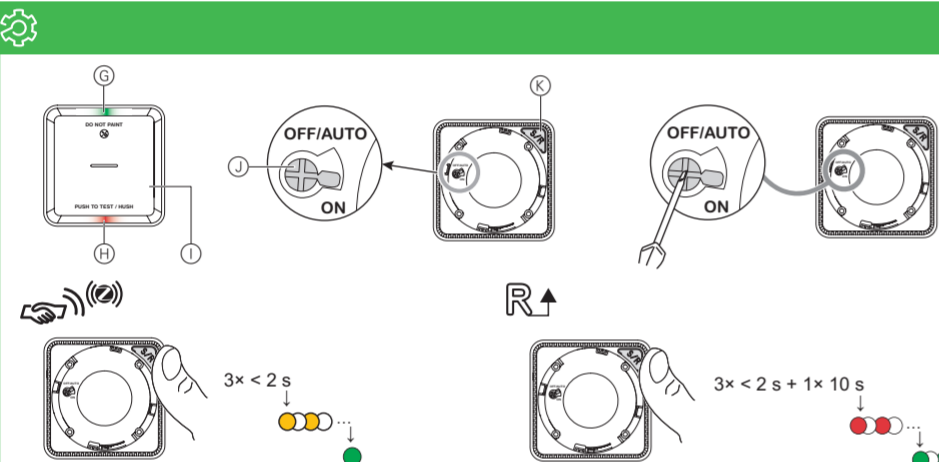
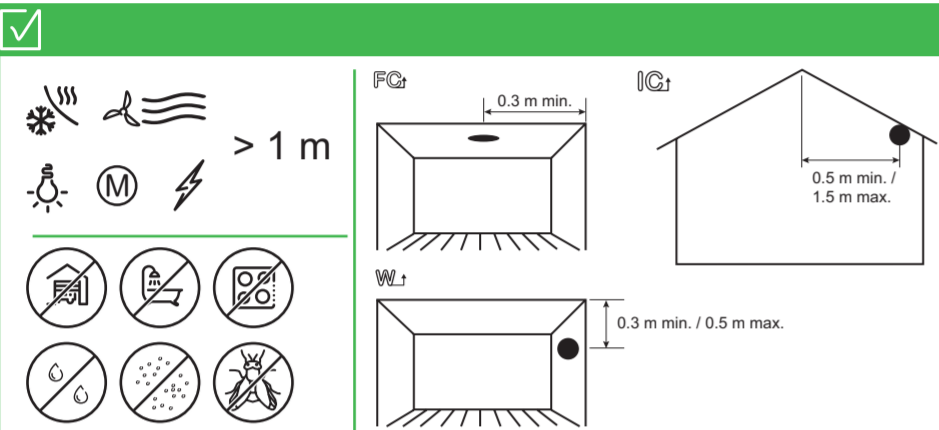
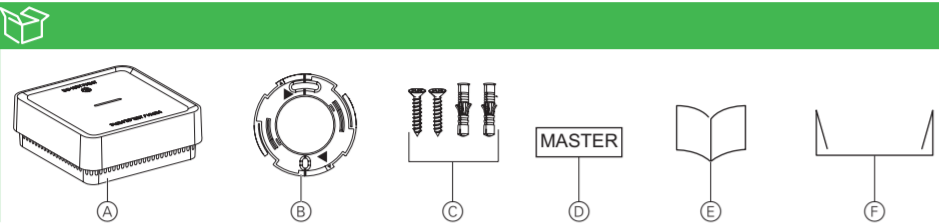


CCT599001



Refer to the **system user guide** for more information:  
[https://www.productinfo.schneider-electric.com/wiser\\_eu/](https://www.productinfo.schneider-electric.com/wiser_eu/)



**en Wiser Smoke Alarm - Battery**

**For your safety**

**NOTICE**

**EQUIPMENT INSTALLATION HAZARD**

- Always operate the product in compliance with the specified technical data.
- Keep the installation instruction for the life of the product.

**Failure to follow these instructions can result in equipment damage.**

**WARNING**

**SEALED BATTERY HAZARD**

Do not recharge, disassemble or incinerate the battery.

**Failure to follow these instructions can result in death, serious injury or equipment damage.**

**Getting to know the product**

The Wiser Smoke Alarm - Battery (**device**) uses a photoelectric sensor to detect smoke generated by fire. It also includes a temperature sensor that detects heat by rapid increase in temperature. When connected to the Wiser system, the device will send the notifications via the Wiser app.

**Package contents**

- A) Wiser Smoke Alarm - Battery
- B) Mounting base
- C) 2 Screws (M3.5 x 20 mm)
- D) 2 wall plugs
- E) Master label
- F) Installation instructions
- G) Dust cover

**Choosing the installation location**

**NOTICE**

**EQUIPMENT DAMAGE**

- Do not install in garages, kitchens, bathrooms or any area with high levels of moisture, dirt or insects.
- Do not remove the dust cover until all construction work is completed. Construction dust and chemicals causes malfunction and false alarms.
- Install more than 1 m away from air conditioners/heater vents and fans, electrical sources, appliances and fittings.

**Failure to follow these instructions can result in equipment damage.**

The device can be installed on:

- Flat ceiling → FG
- Inclined ceiling → IG
- Wall → W

**Operating elements**

- G) Status LED (Amber, Green and Red LED)
- H) Standby LED (Red LED)
- I) Test/Hush button
- J) Power switch
- K) Setup/Reset button

**Setting the device to Wiser Gateway**

**NOTICE**

- Do not mount the device before the settings. The Setup/Reset button (Zigbee) and power switch are located on the rear side of the device.
- Turn the power switch to ON position while setting up the device, the status LED blinks green for 7 times.
- Read the following steps before pairing to the gateway.

**Connecting to the Wiser Gateway**

- Short press the setup/reset button 3 times in 2 s, the Status LED blinks amber. Then add the device in the Wiser app by following the instructions.
- The Status LED blinks green for few seconds when the device is successfully connected to the Wiser Gateway.

**NOTICE**

When paired with the Wiser Gateway, devices (**smoke alarms**) automatically creates RF interconnection with each other.

**Resetting the device from Wiser Gateway**

Short press the Setup/Reset button 3 times in 2 s and then long press the Setup/Reset button (>10 s) once to reset the device to factory default mode.

**NOTICE**

All configuration data, user data and network data are deleted.

**Interconnecting devices without Wiser Gateway**

Devices can be interconnected via RF connection when there is no Wiser Gateway network. Read the following steps before starting the interconnection.

**NOTICE**

Turn the power switch to ON position on all devices.

- Select a device as **Master** and paste the Master label on it. Other devices must be considered as **Slave**.
- On the master device, short press the Test/Hush button 3 times in 2 s. The Standby LED will be On for 30 s once it is in pairing mode.
- Select a slave device and short press the Test/Hush button 3 times in 2 s. On the master and slave devices the Standby LED blinks 3 times. Then the Standby LED on the master device will be again On for 30 s upon successful RF connection.

- Repeat step ③ on all slave devices.
- To exit from pairing mode, short press (< 0,5 s) the Test/Hush button 3 times on the master device again. The Standby LED will turn Off indicating that the master device is not in pairing mode.

**Unpairing a slave device from RF interconnection**

- To remove a slave device from the mounting base see "Removing a device from the mounting base".
- Do not remove the master device.
- First read the following steps before unpairing a slave device.

- Ensure that the power switch is in OFF/AUTO position.
- Press and hold the Test/Hush button and simultaneously turn the power switch to ON position. The standby LED will be On for 3 s.
- Continue to hold the Test/Hush button until the Standby LED turns Off. Then release the Test/Hush button.
- While the Standby LED is again On for 3 s, short press the Test/Hush button. Then the Standby LED is blinking for 5 s indicating successful unpairing of RF interconnection and the status LED blinks green for 7 times.

**NOTICE**

After removing the slave device from RF interconnection, turn the power switch to OFF/AUTO position.

**LED brightness setting**

Read the following steps before starting the LED brightness setting.

- When the device is Standby mode, short press the Test/Hush button 3 times in 2 s.
- When the Standby LED is On, again short press the Test/Hush button to switch between Min. and Max. LED brightness.
- Again short press the Test/Hush button 3 times in 2 s to store the adjusted brightness level, otherwise wait for 30 s until the Standby LED turns Off then the actual brightness level will be stored.

**NOTICE**

Except the alarm LED, the brightness of all LEDs are adjusted with the above settings.

**Installing the device**

- Install the mounting base on the wall or ceiling
- Position the device on the mounting base. Ensure that the arrows on the device and mounting base are aligned.
- Rotate the device clockwise until it locks onto the mounting base. Ensure that the device is parallel to the wall, otherwise rotate and adjust it to maximum 10°.

**Removing a device from the mounting base**

- Rotate the device anti-clockwise to the end position.
- Insert a flat-headed screwdriver into the small opening of the device to unlock it from the mounting base.
- Hold the screwdriver into the small opening and then rotate the device anti-clockwise to pull it off from the mounting base.

**Operating the device**

**CAUTION**

**DO NOT USE OPEN FLAME**

Do not use an open flame of any type to test a device.

**Failure to follow these instructions can result in equipment damage.**

**Testing the device**

**NOTICE**

Test the device once per month to ensure proper operation.

Press the Test/Hush button on each device for more than 3 s until an alarm sound is triggered. If the device does not produce an alarm sound, then the battery may be low or there may be other issues in the device. Refer to Troubleshooting.

**Testing all interconnected devices by one operation**

- Select an interconnected device.
- Press and hold the Test/Hush button for more than 10 s until all interconnected devices trigger an alarm.
- If the interconnected devices do not produce an alarm sound, ensure that the wireless interconnection setup is correct. Also the distance between these devices are within the specification.

**Silencing the device**

**Hush feature**

- During an alarm event, identify the device(s) which is/ are blinking Standby LED then short press the Test/Hush button on the device to stop the alarm.

**NOTICE**

The device is not sensitive to smoke for 10 minutes. Later the device resumes to normal operation. During this hush time, the Standby LED blinks once every 8 s.

- In an interconnected group, if more than one device has a blinking Standby LED and alarm sound, short press the Test/Hush button on all devices. Hence all interconnected devices stop sounding within 5 to 10 s.

**NOTICE**

Wait for 10 minutes before performing any test to avoid malfunctioning of the device.

**Temporary disablement**

To temporarily disable the alarm sound in a device, short press the Test/Hush button once when the device is in Standby mode. The specific device will be not sensitive to smoke for 10 minutes.

During this mode the Standby LED blinks once every 8 s.

**Snoozing the device alerts**

**Low battery**

When the battery gets low, 1 beep occurs every 48 s, together with blinking Standby LED. Snooze the low battery indication for 10 hours by short pressing the Test/Hush button.

**NOTICE**

The user must replace the device within 30 days from the first alarm.

**Fault detection**

When a fault is detected in the device, 2 beeps occur every 48 s together with blinking Standby LED. Snooze the indication for 10 hours by short pressing the Test/Hush button.

**Alarm memory**

In an interconnected group, the Standby LED on the triggered device blinks once every 2 s for 72 hours after the alarm has stopped. This allows the user to identify the device that was triggered. Short press the Test/Hush button once to snooze the blinking LED for 10 hours.

**Standby LED and alarming sound indications**

Operating mode	Standby LED	Alarming Sound	Duration
Normal mode / Standby mode	Blinks every 48 s	OFF	—
ALARM MODE	Local alarm	Blinks every 1 s 3 beeps every 4 s	—
	Interconnected alarm	OFF 3 beeps every 4 s	—
Test mode	1 blink every 1 s	3 beeps every 4 s	Until Test/Hush button is released
Wireless interconnection test	OFF	Continuous 3 beeps every 4 s	25 s
Hush mode	Blinks every 8 s	OFF	10 min
Low battery mode	Blinks every 48 s	1 beep every 48 s	End of life: replace the device
FAULT MODE	Low battery	Blinks every 24 s	10 hrs
	Fault	2 beeps every 24 s	10 hrs
	Alarm memory	Blinks every 48 s	10 hrs

**Troubleshooting**

Issue	Resolution/Action
<b>Device does not produce alarm sound when tested</b>	<ol style="list-style-type: none"> <li>Ensure that the device is installed correctly. If you are unsure then remove and reinstall the device (see "Installing the device").</li> <li>Press Test/Hush button until an alarm sound is produced. Do not press consecutively.</li> <li>If the problem persists or if you have questions about the warranty, contact customer care center.</li> </ol>
<b>Device beeps and Standby LED blinks every 48 s</b>	Battery may be low or drained. Replace the device.
<b>Device beeps twice and Standby LED blinks every 48 s</b>	<ol style="list-style-type: none"> <li>Clean the device. Refer to Maintenance section.</li> <li>If the problem persists or if you have questions about the warranty, contact customer care center.</li> </ol>
<b>Device produces alarm sound unexpectedly without smoke or steam</b>	<ol style="list-style-type: none"> <li>Identify the triggered device, indicated by a blinking Standby LED and 3 beeps every 4 s.</li> <li>Press <b>Test/Hush</b> button to pause the alarm sound. Interconnected device stops alarming in 5 to 10 s.</li> <li>Clean the device. Refer to Maintenance.</li> <li>Reinstall the device and test.</li> <li>If the problem persists or if you have questions about the warranty, contact customer care center.</li> </ol> <p><b>NOTICE</b></p> <p>After an alarm event, the device that has blinking Standby LED every 2 s is the triggered device. Identify the device and follow steps 3 to 5.</p>

**False Alarm**

In an event of a false alarm in an interconnected group, it is important to identify the triggering device(s). These devices must be cleaned, serviced or replaced if necessary.

**Maintenance**

It is recommended that the device is inspected monthly and it is free from dirt, dust and insects. The device can be vacuumed or brushed with a soft brush to remove accumulated dust, dirt or kitchen grease. Wipe the device(s) with a small amount of insect surface spray and cloth every 3 to 6 months to mitigate insect ingress.

**NOTICE**

Always test the device after cleaning.

**NOTICE**

**EQUIPMENT MAINTENANCE INSTRUCTIONS**

- Test the device regularly to ensure its functionality and the battery is in good condition.
- Replace the device after 10 years from the date of manufacturing.
- Do not open the device casing or repair yourself. There are no serviceable parts inside.

**Failure to follow these instructions can result in equipment damage.**

**Technical data**

<b>Battery Life</b>	10 years
<b>Operating Current</b>	≤70 mA
<b>Sensing Type</b>	Photoelectric. This alarm contains NO radioactive material.
<b>Operating Temperature</b>	0 °C to 45 °C
<b>Ambient Humidity</b>	5% to 95%
<b>Interconnecting</b>	RF+Zigbee, max. 40 devices in one network
<b>Operating frequency</b>	Zigbee: 2405 - 2480 MHz RF: 868 MHz
<b>Wireless Range</b>	40m indoor line of sight
<b>Horn Level</b>	85 dB at 3 m
<b>Mounting Type</b>	Mount on ceiling and wall only
<b>Dimensions (H x W x D)</b>	89 x 89 x 33.5 mm
<b>Leisure accommodation vehicles</b>	Yes
<b>Standard</b>	EN 14604
<b>Certification</b>	Zigbee 3.0

Dispose of the device separately from household waste at an official collection point. Professional recycling protects people and the environment against potential negative effects.

**Trademarks**

- Wiser™ is a trademark and the property of Schneider Electric SE, its subsidiaries and affiliated companies.
- Zigbee® is a registered trademark of the Connectivity Standards Alliance.
- Apple® and App Store® are brand names or registered trademarks of Apple Inc.
- Google Play™ Store and Android™ are brand names or registered trademarks of Google Inc.

Other brands and registered trademarks are properties of their relevant owners.

**EU Declaration of conformity**

Hereby, Schneider Electric Industries, declares that this product is in compliance with the essential requirements and other relevant provisions of RADIO EQUIPMENT DIRECTIVE 2014/53/EU. Declaration of conformity can be downloaded on: [se.com/docs](https://se.com/docs).

**Schneider Electric Industries SAS**

If you have technical questions, please contact the Customer Care Centre in your country. [se.com/contact](https://se.com/contact)



1116-CPR-147  
 DOP1000021  
 EN 14604: 2005 + AC: 2008  
 35 rue Joseph Monier F-92500 Rueil-Malmaison France