

Polyseam AS
Ravnevejen 7
3174 Revetal
Norway

Eurofins Product Testing A/S
Smedeskovvej 38
8464 Galten
Denmark

VOC@eurofins.com
www.eurofins.com/VOC-testing

VOC TEST REPORT EMICODE

16 October 2015


1 Sample Information

Sample identification	392-2015-00170601
Sample name	Protecta FR Foam
Batch no.	LOT: 22 5 1 086 4 11
Production date	29/05/15
Product type	Sealant
Sample reception	04/06/2015

2 Brief Evaluation of the Results

Regulation or protocol	Conclusion	Version of regulation or protocol
EMICODE	EC 1 PLUS	April 2013

Full details based on the testing and direct comparison with limit values is available in the following pages


Lise L. Clement
Chemist



Janne R. Norup
Chemist

Table of contents

1	Sample Information	1
2	Brief Evaluation of the Results	1
3	Applied Test Methods	3
3.1	General Test References	3
3.2	Specific Laboratory Sampling and Analyses	3
4	Test Parameters, Sample Preparation and deviations	4
4.1	VOC Emission Chamber Test Parameters	4
4.2	Preparation of the Test Specimen	4
4.3	VOC Emission Picture of Sample	4
4.4	Deviations from Referenced Protocols and Regulations	4
4.5	VOC Emission Test Results after 3 Days	5
4.6	VOC Emission Test Results after 28 Days	6
5	Summary and Evaluation of the Results	7
5.1	Comparison with Limit Values of EMICODE	7
6	Appendices	8
6.1	Chromatogram of VOC Emissions after 3 Days	8
6.2	Chromatogram of VOC Emissions after 28 Days	8
6.3	How to Understand the Results	9
6.4	Applied LCI and NIK Values	10
6.5	Qualitative Description of VOC Emission Test	11
6.6	Quality Assurance	13
6.7	Accreditation	13
6.8	Uncertainty of the Test Method	13

3 Applied Test Methods

3.1 General Test References

Regulation, protocol or standard	Version	Reporting limit VOC [$\mu\text{g}/\text{m}^3$]	Calculation of TVOC	Combined uncertainty \pm [RSD(%)]
CEN/TS 16516	October 2013	5	Toluene equivalents	22.5%
ISO 16000 -3 -6 -9 -11	2006-2011 depending on part	2	Toluene equivalents	22.5%
EMICODE	April 2013	5	Toluene equivalents	22.5%

3.2 Specific Laboratory Sampling and Analyses

Parameter	External Method	Internal S.O.P.	Quantification limit	Analytical principle	Uncertainty \pm [RSD(%)]
Sample preparation	ISO 16000-11:2006, EN16402:2013, CDPH, AgBB/DIBt, EMICODE	71M549810	-	-	5%
VOC emission chamber testing	ISO 16000-9:2006, CEN/TS 16516:2013	71M549811	-	Chamber and air control	5%
Sampling of VOC	ISO 16000-6:2011, CEN/TS 16516:2013	71M549812	5 L	Tenax TA	5%
Analysis of VOC	ISO 16000-6:2011, CEN/TS 16516:2013	71M542808B	1 $\mu\text{g}/\text{m}^3$	ATD-GC/MS	10%
Sampling of aldehydes	ISO 16000-3:2011, CEN/TS 16516:2013	71M549812	35 L	DNPH	5%
Analysis of aldehydes	ISO 16000-3:2011, EN 717-1, CEN/TS 16516:2013	71M548400	3-6 $\mu\text{g}/\text{m}^3$	HPLC-UV	10%

The results are only valid for the tested sample(s).

This report may only be copied or reprinted in its entity, parts of it only with a written acceptance by Eurofins.

4 Test Parameters, Sample Preparation and deviations

4.1 VOC Emission Chamber Test Parameters

Parameter	Value	Parameter	Value
Chamber volume, V[L]	119	Preconditioning period	-
Air Change rate, $n[h^{-1}]$	0.5	Test period	26/06/2015 – 24/07/2015
Relative humidity of supply air, RH [%]	50 ± 3	Area specific ventilation rate, q [m/h or m ³ /m ² /h]	71
Temperature, T [°C]	23 ± 1	Loading factor [m ² /m ³]	0.007

4.2 Preparation of the Test Specimen

A part of the sample was sprayed on a glass plate and let to dry. From the dried sample a specimen was cut out and placed into a sample holder (width 15 mm, depth 100 mm). The specimen filled out the whole sample holder leaving no empty spaces inside the holder.

4.3 VOC Emission Picture of Sample



4.4 Deviations from Referenced Protocols and Regulations

No deviations from the referenced test methods were observed.

4.5 VOC Emission Test Results after 3 Days

	CAS No.	Retention time [min]	ID-Cat	Specific Conc. [µg/m³]	Toluene eq. [µg/m³]	Specific SER [µg/(m²*h)]	R _D
VOC with NIK							
None determined							
Sum of VOC with NIK				< 5	< 5	< 400	
VOC without NIK							
None determined							
Sum of VOC without NIK				< 5	< 5	< 400	
TVOC				< 5	< 5	< 400	
VVOC compounds							
None determined							
TVVOC				< 5	< 5	< 400	
SVOC compounds							
None determined							
TSVOC				< 5	< 5	< 400	
Carcinogens							
Total carcinogens				< 1	< 1	< 80	
Aldehydes							
Formaldehyde	50-00-0		1	< 3	-	< 300	
Acetaldehyde	75-07-0		1	< 3	-	< 300	
R-values							0

4.6 VOC Emission Test Results after 28 Days

	CAS No.	Retention time [min]	ID-Cat	Specific Conc. [µg/m ³]	Toluene eq. [µg/m ³]	Specific SER [µg/(m ² *h)]	R _D
VOC with NIK							
2-Ethyl-1-hexanol	104-76-7	8.94	1	< 5	< 5	< 400	-
Sum of VOC with NIK				< 5	< 5	< 400	
VOC without NIK							
None determined							
Sum of VOC without NIK				< 5	< 5	< 400	
TVOC				< 5	< 5	< 400	
VVOC compounds							
None determined							
TVVOC				< 5	< 5	< 400	
SVOC compounds							
None determined							
TSVOC				< 5	< 5	< 400	
Carcinogens							
Total carcinogens				< 1	< 1	< 80	
R-values							0

5 Summary and Evaluation of the Results

5.1 Comparison with Limit Values of EMICODE

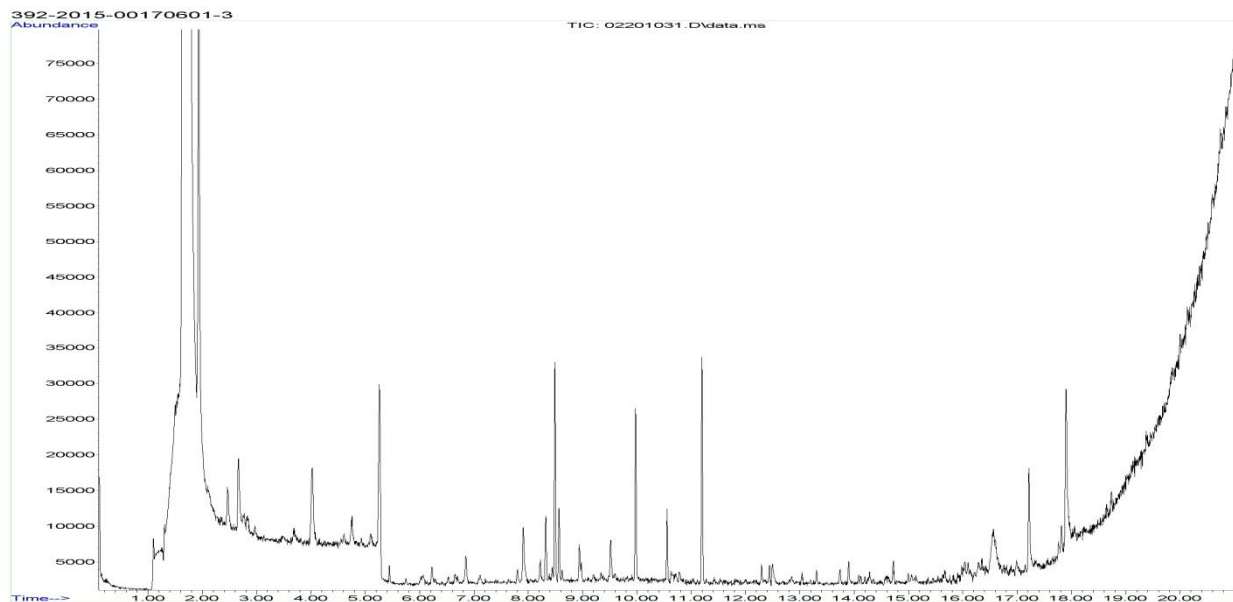
Parameter	Concentration $\mu\text{g}/\text{m}^3$	EC 2 $\mu\text{g}/\text{m}^3$	EC 1 $\mu\text{g}/\text{m}^3$	EC 1 PLUS $\mu\text{g}/\text{m}^3$
TVOC 3 days	< 5	≤ 3000	≤ 1000	≤ 750
TVOC 28 days	< 5	≤ 300	≤ 100	≤ 60
TSVOC 28 days	< 5	≤ 100	≤ 50	≤ 40
Sum without NIK 28 days	< 5	>40		≤ 40
R-value (dimensionless) 28 days	0	>1		≤ 1
Formaldehyde 3 days	< 3	≤ 50		
Acetaldehyde 3 days	< 3	≤ 50		
Sum Formaldehyde+Acetaldehyde [ppm]	< 0.005	≤ 0.05		
Sum carcinogens 3 days	< 1	≤ 10		
Sum carcinogens 28 days	< 1	≤ 1		

This test report does not alone entitle to use the protected trademark label EMICODE. For the use of an EMICODE label a license has to be applied for at the GEV, Düsseldorf, Germany. A license can only be granted for ready-to use products, if some additional requirements on contents of certain chemicals (e.g. solvent-free) are fulfilled.

Note: The label is supplemented with a final letter R (e.g. EMICODE EC 1 R) for installation products that fulfill the specification in clause 3.1.2 sentence 2 of GEV classification criteria and that therefore may require measures for ensuring occupational safety during application.

6 Appendices

6.1 Chromatogram of VOC Emissions after 3 Days



6.2 Chromatogram of VOC Emissions after 28 Days



Please consider the different scales.

The results are only valid for the tested sample(s).

This report may only be copied or reprinted in its entity, parts of it only with a written acceptance by Eurofins.

6.3 How to Understand the Results

6.3.1 Acronyms Used in the Report

- < Means less than
- > Means bigger than (Tube/GC-MS overload)
- * Not a part of our accreditation
- α Um(%) is given as 2x RSD%. Please see section regarding Uncertainty in the Appendices.
- § Deviation from method. Please see deviation section
- a The method is not optimal for very volatile compounds. For these substances smaller results and a higher measurement uncertainty cannot be ruled out.
- b The component originates from the wooden panels and is thus removed.
- c The results have been corrected by the emission from wooden panels.
- d Very polar organic compounds are not suitable for reliable quantification using tenax TA adsorbent and HP-5 GC column. A high degree of uncertainty must be expected.

SER Specific emission rate.

6.3.2 Explanation of ID Category

Categories of Identity:

- 1: Identified and specifically calibrated
- 2: Identified by comparison with a mass spectrum obtained from library and supported by other information. Calibrated as toluene equivalent.
- 3: Identified by comparison with a mass spectrum obtained from a library. Calibrated as toluene equivalent.
- 4: Not identified, calibrated as toluene equivalent.

6.4 Applied LCI and NIK Values

6.4.1 LCI/NIK Values for Compounds found after 3 Day Measurements

Compound	CAS No.	AgBB 2015 NIK [µg/m³]
None determined	-	-

6.4.2 LCI/NIK Values for Compounds found after 28 Day Measurements

Compound	CAS No.	AgBB 2015 NIK [µg/m³]
2-Ethyl-1-hexanol	104-76-7	300

6.5 Qualitative Description of VOC Emission Test

6.5.1 Test Chamber

The test chamber is made of stainless steel. A multi-step air clean-up is performed before loading the chamber, and a blank check of the empty chamber is performed.

The chamber operation parameters are as described in the test method section (CEN/TS 16516, ISO 16000-9, internal method no.: 71M549811).

6.5.2 Expression of the Test Results

All test results are calculated as specific emissions rate, and as extrapolated air concentration in the European Reference Room (CEN/TS 16516, AgBB, EMICODE, M1 and Indoor Air Comfort).

6.5.3 Testing of Carcinogenic VOCs

The emission of carcinogens (EU Categories C1A and C1B, as per European law) is tested by drawing sample air from the test chamber outlet through Tenax TA tubes after the specified duration of storage in the ventilated test chamber. Analysis is performed by ATD-GC/MS (automated thermal desorption coupled with gas chromatography and mass spectroscopy using 30 m HP-5 (slightly polar) column with 0.25 mm ID and 0.25 µm film, Agilent) (CEN/TS 16516, ISO 16000-6, internal methods no.: 71M549812 / 71M542808B).

All identified carcinogenic VOCs are listed; if a carcinogenic VOC is not listed then it has not been detected. Quantification is performed using the TIC signal and authentic response factors, or the relative response factors relative to toluene for the individual compounds.

This test only covers substances that can be adsorbed on Tenax TA and can be thermally desorbed. If other emissions occur, then these substances cannot be detected (or with limited reliability only).

6.5.4 Testing of VOC, SVOC and VVOC

The emissions of volatile organic compounds are tested by drawing sample air from the test chamber outlet through Tenax TA tubes after the specified duration of storage in the ventilated test chamber. Analysis is performed by ATD-GC/MS using HP-5 column (30 m, 0.25mm ID, 0.25µm film) (CEN/TS 16516, ISO 16000-6, internal methods no.: 71M549812 / 71M542808B).

All single substances that are listed with a LCI/NIK value in the latest publications (hereafter referred to as target compounds) are identified if present. All other appearing VOCs are identified as far as possible. Quantification of target compounds is done using the TIC signal and authentic response factors, or the relative response factors relative to toluene. For certain compound groups, which differ significantly in chemistry from toluene, quantification is performed relative to a representative member of the group for more accurate and precise results. This can include quantification of for example glycols and acids. In addition to that, all results are also expressed in toluene equivalents. All non-target compounds, as well as all non-identified substances, are quantified in toluene equivalents.

The results of the individual substances are calculated in three groups depending on their retention time when analyzing using a non-polar column (HP-1):

- Volatile Organic Compounds (VOC) are defined as: All substances eluting between and including n-hexane (n-C6) and n-hexadecane (n-C16)
- Semi-Volatile Organic Compounds (SVOC) are defined as: All substances eluting after n-hexadecane (n-C16) and before and including n-docosane (n-C22)
- Very Volatile Organic Compounds (VVOC) are defined as: All substances eluting before n-hexane (n-C6).

Total Volatile Organic Compounds (TVOC) is calculated by summation of all individual VOCs with a concentration $\geq 5 \mu\text{g}/\text{m}^3$. The TVOC can be expressed either in toluene equivalents as defined in CEN/TS 16516 and similar to ISO 16000-6, or as the sum of concentrations using specific or relative response factors. In the case of summation of concentrations using authentic or relative response factors, the toluene equivalent is applied to all non-target and non-identified VOCs before summing up. Compounds regarded as VOC in line with the above definition but elute before n-C6 or after n-C16 on the HP-5 column are treated as VOC, and are thus added to the TVOC.

Total Semi-Volatile Organic Compounds (TSVOC) is calculated by the summation of all individual SVOCs expressed in toluene equivalents with a concentration $\geq 5 \mu\text{g}/\text{m}^3$, as defined in CEN/TS 16516. VOCs that are regarded as VOC in line with the above definition, but elute after n-C16 in this test, are not added to the TSVOC.

Total Very Volatile Organic Compounds (TVVOC) is calculated by the summation of all individual VVOCs with a concentration $\geq 5 \mu\text{g}/\text{m}^3$ and expressed in toluene equivalents. VOCs that are regarded as VOC in line with the above definition, but elute before n-C6 in this test, are not added to the TVVOC.

This test only covers substances which can be adsorbed on Tenax TA and can be thermally desorbed. If emissions of substances outside these specifications occur then these substances cannot be detected (or with limited reliability only).

6.5.5 Calculation of R Values with LCI Lists

The concentrations of detected compounds $\geq 5 \mu\text{g}/\text{m}^3$ are divided by their respective LCI/NIK value (if defined in the given publication). The sum of the quotients gives the R value, which can be mathematically expressed:

$$R = \sum_i^n \left(\frac{c_i}{\text{NIK}_i} + \dots + \frac{c_n}{\text{NIK}_n} \right)$$

This R value is calculated, depending on the purpose of this test, for the European LCI list, for the German LCI/NIK list (R_D), and/or for the Belgian LCI list (R_B).

All VOCs without published LCI/NIK value and concentration $\geq 5 \mu\text{g}/\text{m}^3$ are summed up as sum of VOCs without LCI/NIK if required by the standard or protocol.

6.5.6 Testing of Aldehydes

The presence of aldehydes after the specified duration of storage in the ventilated test chamber is tested by drawing air samples from the test chamber outlet through DNPH-coated silicagel tubes after the specified duration of storage in the ventilated test chamber. Analysis is performed by solvent desorption and subsequently by HPLC and UV-/diode array detection (CEN/TS 16516, ISO 16000-3, VDI 3862 Blatt 3, internal methods no.: 71M549812 / 71M548400).

The absence of formaldehyde and other aldehydes is stated if UV detector response at the specific wavelength is lacking at the specific retention time in the chromatogram. Otherwise it is checked whether the reporting limit is exceeded. In this case the identity is finally checked by comparing full scan sample UV spectra with full scan standard UV spectra.

6.6 Quality Assurance

Before loading the test chamber, a blank check of the empty chamber is performed and compliance with background concentrations in accordance with CEN/TS 16516 / ISO 16000-9 is determined.

Air sampling at the chamber outlet and subsequent analysis is performed in duplicate. Relative humidity, temperature and air change rate in the chambers is logged every 5 minutes and checked daily. A double determination is performed on random samples at a regular interval and results are registered in a control chart to ensure the uncertainty and reproducibility of the method.

The stability of the analytical system is checked by a general function test of device and column, and by use of control charts for monitoring the response of individual substances prior to each analytical sequence.

6.7 Accreditation

The testing methods described above are accredited on line with EN ISO/IEC 17025 by DANAK (no. 522). This accreditation is valid worldwide due to mutual approvals of the national accreditation bodies (ILAC/IAF, see also www.eurofins.com/galten.aspx#accreditation).

Not all parameters are covered by this accreditation. The accreditation does not cover parameters marked with an asterisk (*), however analysis of these parameters is conducted at the same level of quality as for the accredited parameters.

6.8 Uncertainty of the Test Method

The relative standard deviation of the overall analysis is 22%. The expanded uncertainty U_m equals 2 x RSD. For further information please visit www.eurofins.dk/uncertainty.