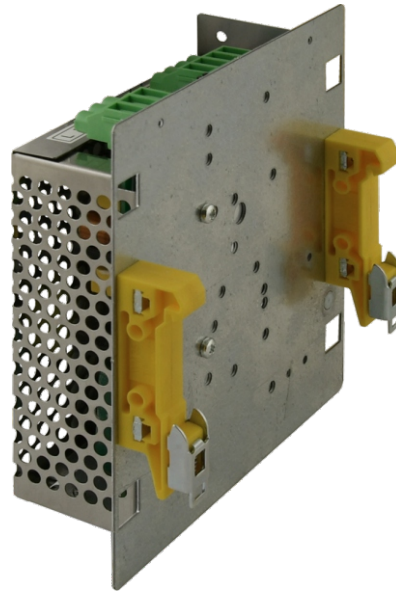
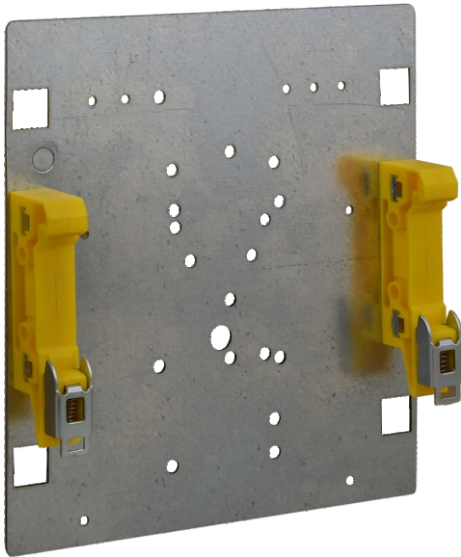


CODE: **DIN2** v1.0/1
NAME: **DIN holder for power supply units and transformers**

EN

EXAMPLES OF APPLICATION



Caution!
power supply unit is not included

DESTINATION

DIN2 holder is designed as an accessory allows mounting power supply units on DIN rail.

Compatible devices list:

Power supplies PS series: **PS-12V2A, PS-12V3A, PS-12V5A, PS-48V1A**

Power supplies PSB series: **PSB-12V2A, PSB-12V3A, PSB-12V5A, PSB-24V2A**

Power supplies RS series: **RS-15xxx, RS-25xxx, RS-50xxx, RS-75xxx, LRS-35xxx, LRS-50xxx, LRS-75xxx**

Transformers: **TOR/TRP/TRZ 50VA-150VA**

Included with the bracket is a set of screws (4 pieces M3x4) for mounting of the power supply to the bracket.

TECHNICAL DATA

Dimensions: W=128, L=25, H=137 [± 2mm]

Operating conditions: class II, -10°C + 40°C

Mounting elements:
- 2 x DIN rail holders
- 4 x M3x4

Notes: made with metal

Warranty: 2 years from production date
