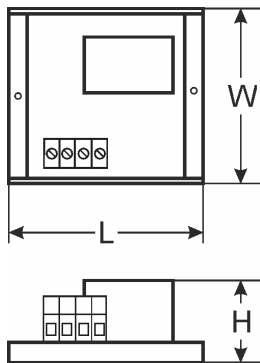
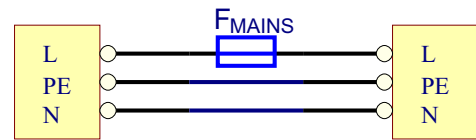
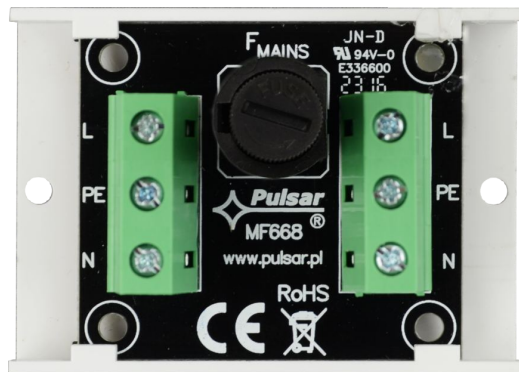


CODE: **AWZ618** v.1.0/II
NAME: **LB1P/1x3,15A/1,5/FTA/230V fuse module.**

EN



DESCRIPTION

The **LB1P/1x3,15A/1,5/FTA/230V** fuse module is designed to protect the power supply circuits requiring a voltage of 230V AC. It is fitted with the one input for power supply and one output is equipped with short circuit protection (SCP), melting fuse (T 3,15A). The module is adapted for connection of cables with a maximum cross section of **1,5mm²**.

SPECIFICATIONS

Supply voltage	230V AC (-15% / +10%)
Output voltage	equal to supply voltage
Number of power inputs	1 – 1,5mm² max. cable
Number of power outputs	1 – 1,5mm² max. cable
Short circuit protection SCP	1 x T 3,15A
F_{MAINS} fuse	T 3,15A
Operating conditions	II environmental class, -10°C ÷ 50°C
Dimensions	L=60, W=43, H=40 (+/-2mm)
Installation	A mounting panel with an adhesive tape, mounting screws x 2 (holes 3mm)
Connectors:	screw connection Φ0,51÷1,63 (AWG 24-14) 0,2 ÷ 1,5mm ²
Net/gross weight	0,03kg / 0,05kg
Declarations, warranty	CE, 2 year from the production date



Caution!

The unit is supplied with hazardous mains voltage of 230 V/AC. Use extreme caution when connecting and running the device!